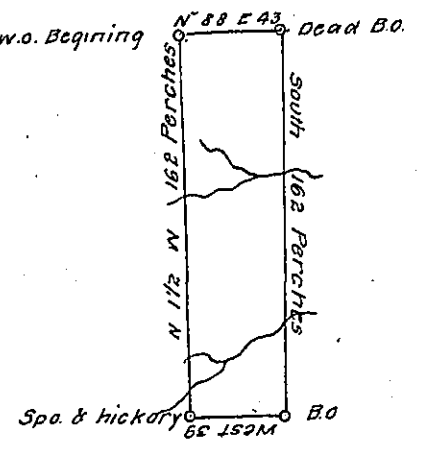


FORM No. 1.

C 23-124-125

Samuel Litten

James Crawford.



Zephaniah Beall.

a-71-45

Thos Cooper.

A draught of a survey situate on the waters of Plumbe Run  
 in Washington County called Long Grove containing 39 acres  
 & allowance of 6 P G

Survey'd May 1 1787 In pursuance of a warrant Grant  
 George Whitehill Feby 9th 1787

P.m-

John Lukens Esq<sup>r</sup>

Jno Hoge D.S

S G<sup>1</sup> State of Penn<sup>1</sup>

IN TESTIMONY that the above is a copy of the original remaining on file in  
 the Department of Internal Affairs of Pennsylvania, made  
 conformably to an Act of Assembly approved the 16th day of  
 February 1833, I have hereunto set my hand and caused  
 the Seal of said Department to be affixed at Harrisburg,  
 this third day of May 1907.

*Joac B Brown*  
 Secretary of Internal Affairs.